

CITY OF MELBOURNE

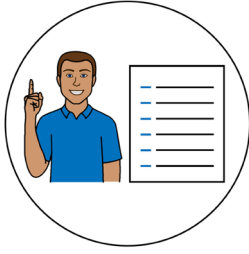
A more inclusive city of Melbourne

A study by City of Melbourne and University of Melbourne



Easy English





Hard words

This book has some hard words.

The first time we write a hard word

- the word is in **blue**
- we write what the hard word means.

You can get help with this book



You can get someone to help you

- read this book
- know what this book is about



- find more information.

About this book

This book is written by City of Melbourne.

When you see the word **we** it means
City of Melbourne.



This book has important information about a
research study done by

- City of Melbourne

and

- University of Melbourne.



A research study is when people look for
information to learn more about something.

When was the study done?

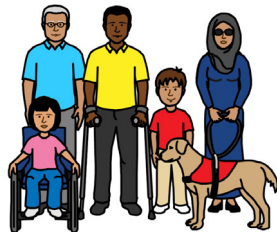
January 2019						
S	M	T	W	T	F	S
		1	2	3	4	5
6	7	8	9	10	11	12
13	14	15	16	17	18	19
20	21	22	23	24	25	26
27	28	29	30	31		

The study was done early 2019.

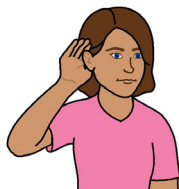
What was the study about?



The study was about how make the city of Melbourne more **inclusive** for people with disability.

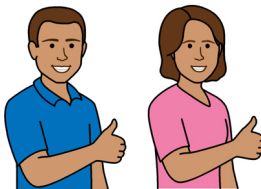


Inclusive means people with disability are part of the community.

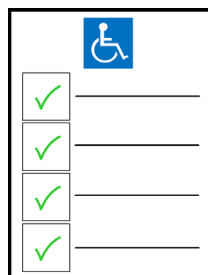


We wanted to

- hear ideas



- choose the best ideas



- find ways to make the ideas happen.

Who was in the study?

We asked lots of people to give us ideas.

For example, we asked

- people with disability and the **Disability Advisory Committee members**



- City of Melbourne staff



- disability **advocates**



- **academics.**

Disability Advisory Committee members find ways for us to make the city of Melbourne more inclusive.

Advocates help people with disability to choose what they want.

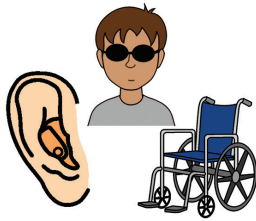
Academics work on research studies.

What happened in the study?



We asked people to come to different workshops.

We had 5 workshops.



Each workshop was about a different type of disability.

For example

- physical disability
- sensory disability
- intellectual disability
- psychological disability

There was also a workshop about all types of disabilities.

How many people were at the workshops?



There were 79 people at the workshops.

How many ideas did people have?



There were 240 ideas about how to make the city of Melbourne more inclusive.

People in the workshops chose which ideas

PLAN	
1	_____
2	_____
3	_____
4	_____

- were the most important

- could happen.

What were the ideas?

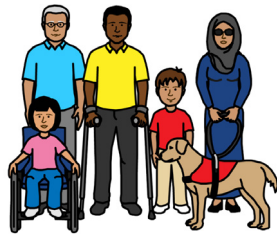


PLAN	
1	
2	
3	
4	

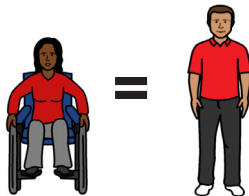
Lots of people said

- people with disability should give their ideas about our plans

- City of Melbourne staff should learn more about **inclusion** and **equality**.



Inclusion means people with disability are part of the community.



Equality means everyone has the same rights.



People also said

- people with disability should be able to get different jobs at City of Melbourne




- City of Melbourne should lead the way with inclusion.



- information should be easy to read and understand
 - for example, Easy English.

What will happen to the ideas?

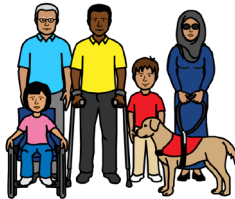
City of Melbourne will include ideas from the study in

	
<input checked="" type="checkbox"/>	_____
<input checked="" type="checkbox"/>	_____
<input checked="" type="checkbox"/>	_____
<input checked="" type="checkbox"/>	_____

- the next Disability Action Plan

PLAN	
1	_____
2	_____
3	_____
4	_____

- other council plans.



We want to make the City of Melbourne more inclusive for everyone.



More information

For more information contact
City of Melbourne



Call 03 9658 8679



Website www.melbourne.vic.gov.au



Email Vicfer@melbourne.vic.gov.au

If you are deaf or have a hearing or speech
impairment you can use the
[National Relay Service](#).

Give the relay officer the City of Melbourne
phone number.

© Scope (Aust) Ltd. You may use this document for your own personal, non-commercial purposes only. You must not use the document for any other purpose and must not copy, reproduce, digitise, communicate, adapt or modify the document, or any part of it, (or authorise any other person to do so) without the prior consent of Scope (Aust) Ltd.

Scope's Communication and Inclusion Resource Centre wrote the Easy English version in May 2019.

To contact Scope call 1300 472 673 or visit www.scopeaust.org.au

To see the original contact City of Melbourne.

The Picture Communication Symbols ©1981–2019 by Tobii Dynavox.

All Rights Reserved Worldwide. Used with permission.

Boardmaker® is a trademark of Tobii Dynavox.