

Report

People from Culturally and Linguistically Diverse (CALD) backgrounds and the NDIS



This report is about how people from Culturally and Linguistically Diverse backgrounds use the NDIS.

CALD for short.



CALD people are

- People from different cultures
- People born in different countries or who have parents born in different countries
- People who speak a different language



NDIS is short for National Disability Insurance Scheme.



We spoke to people from CALD communities in Victoria.

They told us about important issues with the NDIS.

Different ways people think about disability



Some CALD people have different ideas about disability.

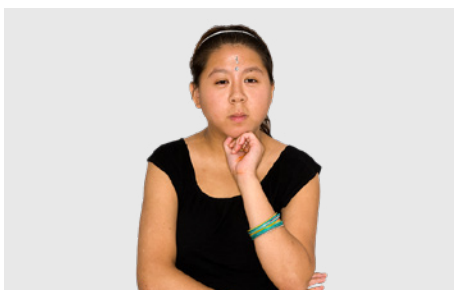


This can change how people from CALD backgrounds use the NDIS.



Some people have not had disability support before.

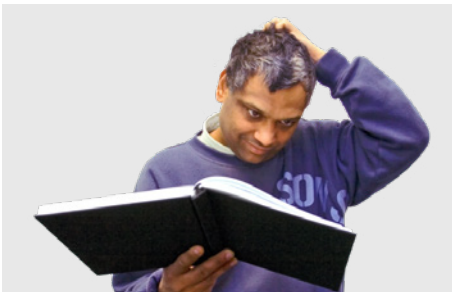
This could be people that are new in Australia.



Some people do not know how disability support from the government works.

They may not have got disability support from government before.

The NDIS and people from a CALD background



There is not much information about the NDIS in other languages.



This makes it hard for CALD people to

- Learn about the NDIS
- Use the NDIS



With information about the NDIS in other languages people can find out about disability.

They can get the support they need.



Some NDIS workers do not know how to support people from CALD backgrounds.



People want NDIS workers to understand how

- Important family and community is
- People understand disability and support
- To work with people from CALD backgrounds

Advocacy and support



People said community advocacy groups are very important.

They can help people understand the NDIS.



They help people

- Get on the NDIS
- Get a plan that is right for them
- Find good services and supports



Community advocacy groups help support workers and service providers better understand the needs of CALD people.

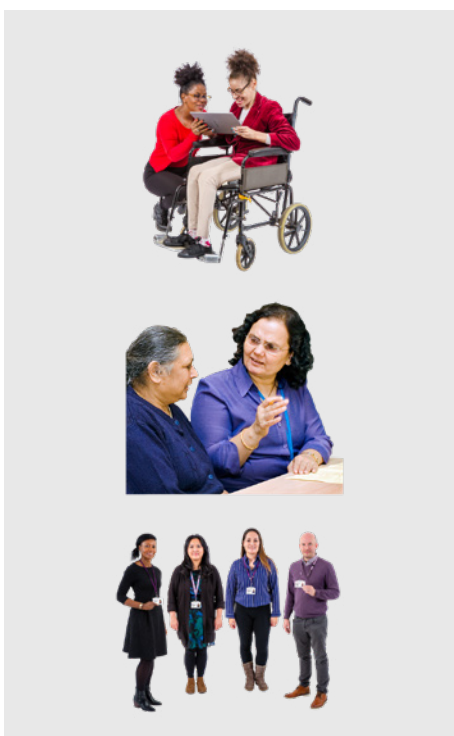


Community advocacy groups will find it hard to help people if they do not get enough money from the government.

Using services and supports



Many people from CALD backgrounds cannot get the right services and supports.



This could be

- Disability services
- Interpreters who help people to understand the language
- Support workers

Contact us



For more information about this report email Alexandra on

Alexandra.devine@unimelb.edu.au

CID made this document Easy Read. You need to ask CID if you want to use any of the pictures. Contact CID at business@cid.org.au